

# C1 Operation Manual

---

[www.colorlight-led.com](http://www.colorlight-led.com)

## Contents

Contents .....	2
Chapter One、First Use.....	3
1.1 Setting A/B Port's Control Area By USB Drive.....	3
1.2 Default Parameter Of net work.....	4
1.3 Setting Parameter Of net work By USB Drive.....	4
1.3.1 C1S Or C1L Connect LAN By Cable .....	5
1.3.2 Setting C1L's wifi-ap .....	5
1.3.3 C1S Or C1L Connect PC By Cable.....	6
1.3.4 Setting C1L turn on wifi-ap and connect LAN at the same time (Recommendation) .....	6
1.4 Eliciting information of C1 by USB drive .....	7
Chapter Two、Update Program By USB drive.....	8
2.1 Edit The Program.....	8
2.2 Publish Program To USB Drive .....	8
2.3 Publish Many Programs To USB Drive .....	9
Chapter Three、PC Management In LAN.....	11
3.1 Search C1 .....	11
3.2 Cloudy Configure .....	12
3.3 The Rule Of Updating Program In LAN.....	12
Chapter Four、Controlling C1 by phone or pad .....	13
4.1 Use Environment .....	13
4.2 APP Introduce .....	13
4.2.1 Connect C1 .....	14
4.2.2 Home Page Interface .....	14
4.2.3 Upload Program Interface .....	14
4.2.4 Sender Card Interface .....	14
4.2.5 Info Interface .....	14
Chapter Five、Special purpose.....	15
6.1 Loop Cable Backups .....	15
6.2 LAN Give Fixed IP to C1.....	15
6.3 Switch From synchronization to asynchronization .....	16
6.4 Cluster Management .....	16

## Chapter One、First Use

C1 player have an android system and a T7 sending card. Before you using the C1 player, You must debug the led display by PC. By the time, you can connect C1's A/B port to led display by cable.

### 1.1 Setting A/B Port's Control Area By USB Drive

A/B port's control area must greater than or equal to the real display. Otherwise the display won't be controlled. And if your display's resolution isn't over 1280\*512, just usb A port.

First, you must plug the USB drive into PC's USB interface. Then empty the USB drive. Open the software called LEDVISION. Click **Control**, then **Cloudy Drive Management**. Choose the **USB drive**, then click **Cloudy Configure**. You can see the interface like the figure 1-1.

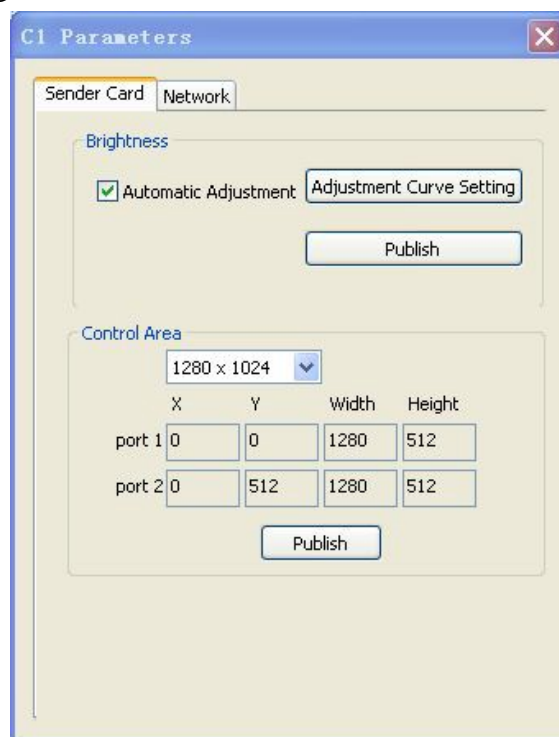


Figure 1-1

The Figure 1-1 show the default setting of control area. If you need to set it, Select the custom and set the parameters. Click **publish** to publish the file of parameter into USB drive. Then pull out the USB drive and plug it into the USB port of running C1. After 5 seconds, you can see the display is being controlled. At this time, you can pull out the USB drive from the USB port of C1. After setting, don't forget to empty the USB drive.

**Notice:** If your USB drive have too much files, C1 won't scan the file of parameter. The attention is the same with set parameter of network and update C1's program by USB drive which related in later page.

## 1.2 Default Parameter Of net work

C1S has no wifi chip, So it can only connect the local area network by cable. The IP mode is DHCP, You just need to connect the WAN port of C1 to the LAN port of router by cable.

C1L default wifi-ap name: C1L-three random letter; pass word: 123456789. When C1L start, you can use PC or phone to search its wifi-ap. Then connect and control it. And LAN mode is DHCP, So you can also connect the WAN port of C1 to the LAN port of router by cable. The default setting is like figure 1-2.

## 1.3 Setting Parameter Of net work By USB Drive

C1 player can be controlled by PC、android phone、iphone and ipad in the LAN. Different environment has different setting.

Setting steps: plug the USB drive into PC's USB interface, Then empty the USB drive, Open the software called LEDVISION. Click **Control** then **Cloudy Drive Management**. Choose the **USB drive**, then click **Cloudy Configure**, select **network**, You can see the interface like the figure 1-2.

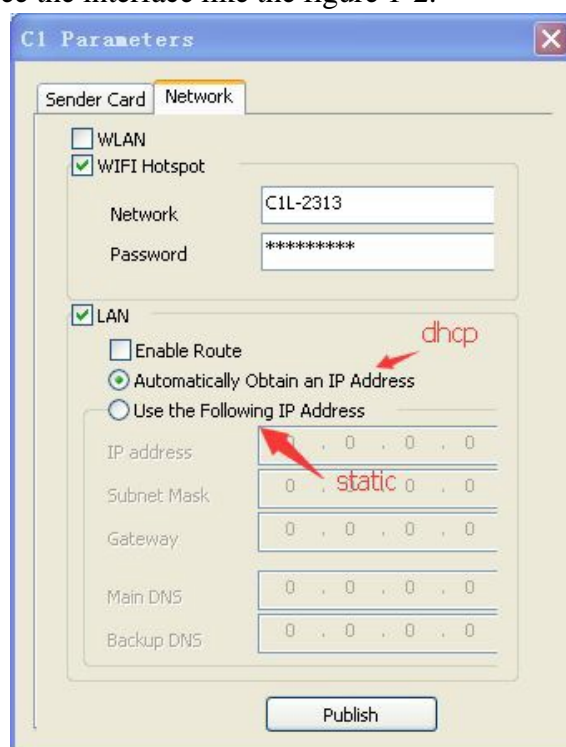


Figure 1-2

**WLAN:** nonsupport

**WIFI Hotspot:** wifi-ap, select it and set wifi-ap's network name and password.

**LAN:** select it and set LAN's mode: DHCP or static. Enable Route is nonsupport.

After setting, Click **publish** to publish the file of parameter into USB drive. Then pull out the USB drive and plug it into the USB port of running C1. After 5 seconds, you can see the display is being controlled. At this time, you can pull out the USB drive from the USB port of C1. After setting, don't forget to empty the USB drive.

### 1.3.1 C1S Or C1L Connect LAN By Cable

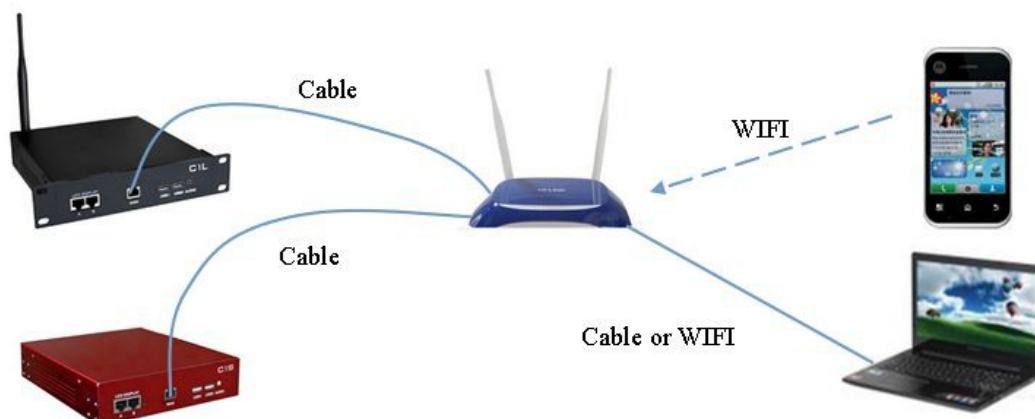


Figure 1-3

Like the figure 1-2, C1S or C1L can connect LAN by cable. At this time, if your phone or PC connects the LAN too. You can use PC or phone to control it. Of course, an LAN can connect many C1 players. If your route doesn't have enough LAN ports, you can use Ethernet switch to extend the LAN port.

C1S and C1L's LAN default mode is DHCP. If you have no need, please don't change it.

### 1.3.2 Setting C1L's wifi-ap

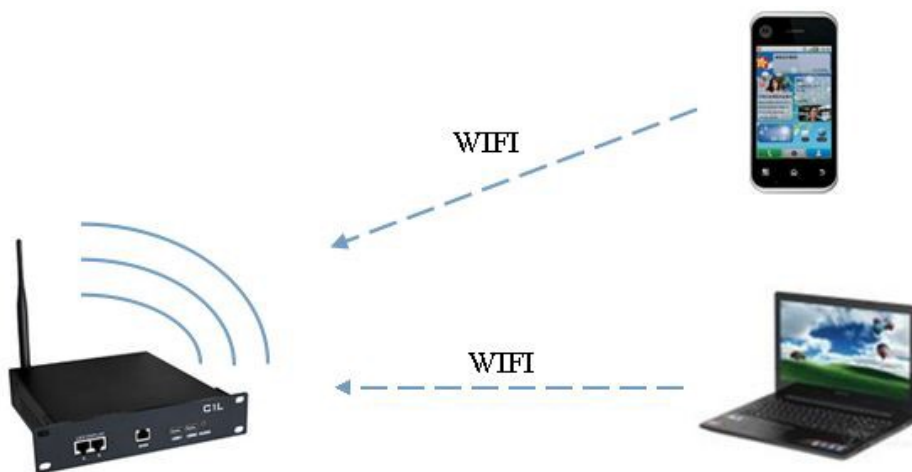


Figure 1-4

C1L has a WiFi chip, and it can be connected as a WiFi-AP. If your phone or PC connects the WiFi-AP, you can control the C1L.

### 1.3.3 C1S Or C1L Connect PC By Cable

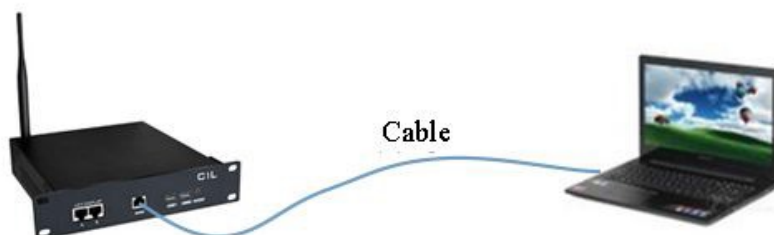


Figure 1-5

When C1S or C1L connect PC by cable, PC and C1's LAN mode must be set up in **static**. And the static IP must in the same network segment, The Subnet mask must be the same.

Setting C1's LAN mode: Open the **network** setting interface, select LAN, and click **Using The Follow IP Address**, Setting IP address and subnet mask, and ignore the gateway、main DNS and backup DNS.

Setting PC's LAN mode: Because of different system has different setting way, You can search the information in internet.

**Notice:** when you use the mode, you must forbidden PC's WLAN card.

### 1.3.4 Setting C1L turn on wifi-ap and connect LAN at the same time

(Recommendation)

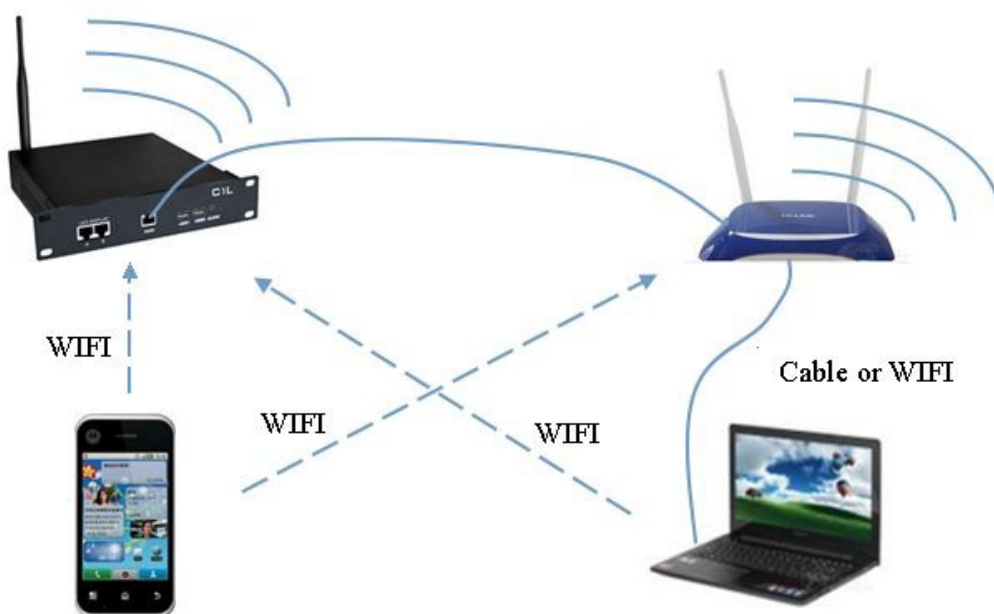


Figure 1-6

Like the Figure 1-6, C1L turn on wifi-ap and connect LAN at the same time. Open the network setting interface, Select the **WIFI Hot** and **LAN** at the same time. In this time, you can control the C1L weather your PC or connect C1L's ap or LAN.

## 1.4 Eliciting information of C1 by USB drive

Setup: plug the USB drive into PC's USB interface, Then empty the USB drive, create a file call **info.txt** like Figure 1-7. Then pull out the USB drive and plug it into the USB port of running C1. After 5 seconds, pull out the USB drive and plug it into the PC. You can see **info-1.txt** in it, use word pad to open the info-1.txt, and you can see the information of C1.



Figure 1-7

## Chapter Two、 Update Program By USB drive

C1 has 4G storage,and you can extend it by USB drive.

### 2.1 Edit The Program

C1 edit program interface is the same with synchronization control system.You don't need to study new interface.C1 support video、 image、 txt、 rtf、 word、 excel、 power point.This is the function list of C1 support:

#### The Function List of C1 Support

Video: Constrain Scale,Volume.
Image:opacity, Stay time, Constrain.
Single line text:Page Play, Move Left, Head Close To Tail, Glaring, Font, Stay time, Font Color, Back Color, Scroll Speed, Stay Time.
Multi-Line Text:Page Play, Scroll Up, Font, Stay time, Font Color, Back Color, Scroll Speed, Stay Time.
Video+Single line.
Video+Multi-Line Text.
Play Many Normal Page.
Page Properties:Background Picture, Background Music.
WORD:Background Color, Inverse, Transparent, Fit Window, Constrain Scale, Reserve Margins, Fix, Stay Time.
EXCEL:Page Play, Scroll Up, Background Color, Inverse, Scroll Speed, Stay Time.
PPT:Stay Time, Constrain Scale.
RTF:Page Play, Scroll Up, Stay time, Back Color, Scroll Speed, Stay Time

Figure 2-1

### 2.2 Publish Program To USB Drive

Plug the USB drive into PC's USB interface,Then empty the USB drive,Open the LEDVISION software.After you edit the program,click **Control** then **Cloudy Drive Management**,and select the **USB drive**.You can see the interface like Figure 2-2.





Figure 2-2

Select **Update Program by USB Drive** or **Play Program from USB Drive**, And click **Publish Program**. wait for publish succeed, Then pull out the USB drive and plug it into the USB port of running C1.

**Update Program by USB Drive:** If you select it, C1 will copy the program into it's storage when you plug USB drive into the USB port of C1. There is a revolving circle in top left corner, it means that C1 is copying the program. When it done, the circle will disappear. C1 will play the program in storage after you pull out the USB drive. And the new program will cover old one.

**Play Program from USB Drive:** If you select it, C1 will play program from USB drive, But C1 won't copy the program. You can find a file called nocopy.txt from USB drive, The file can stop C1 from copying the program.

## 2.3 Publish Many Programs To USB Drive

Following the step in section 2.2, and publish a program to USB drive. You can find 4 files from USB drive like Figure 2-3. It means that the program's name is new, and new is the default name. If you want to publish many programs. You must change the name of program.



Figure 2-3

Open the LEDVISION software, and edit your program. Click **File**, then **save as**, like Figure 2-4.

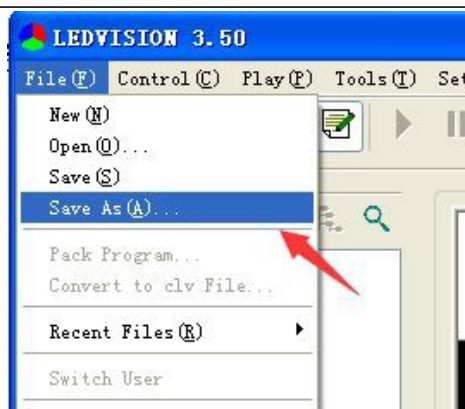


Figure2-4

After you click save as,you can see the interface like Figure 2-5.You can set any save path,And change file name,then click save.Default name is **new**,And we have changed program's name as **1** like Figure 2-5.

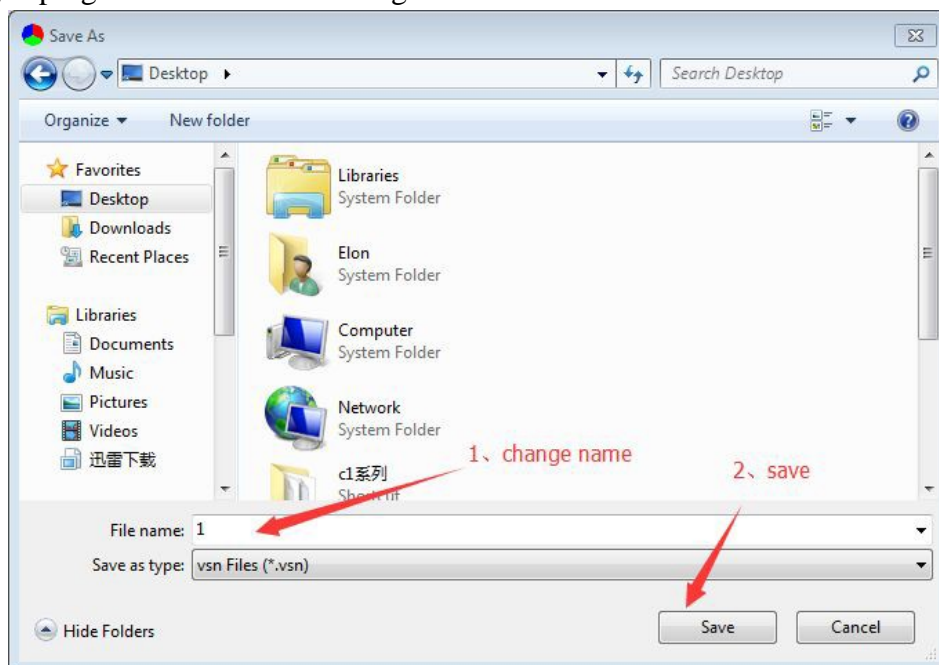


Figure 2-5

After you change program's name.You can publish the program to USB drive.And if you want to publish more program,just repeat the step.At this time,USB drive has two programs called **new** and **1** like Figure 2-6.



Figure 2-6

Plug USB drive with many programs into C1,and C1 will play one of the programs.If you set **Update Program by USB Drive**,C1 will copy all programs to it's storage.

## Chapter Three、PC Management In LAN

PC can manage C1 in LAN.The management is very simple and convenient.The speed of publishing program is very fast,as fast as 3MB/S.

### 3.1 Search C1

If you want to search C1 in LAN.The environment must meet one of the next three conditions:

- 1、 PC connect C1L's wifi-ap,you can see it in section 1.3.2.
- 2、 PC and C1 in the same LAN,you can see it in section 1.3.1. 3、
- PC connect C1 by cable,you can see it in section1.3.3.

After confirming the environment is correct.Open the LEDVISION 3.52,Click Control,then **Cloudy Drive Management**.Select local,and you will see the interface like Figure 3-1.

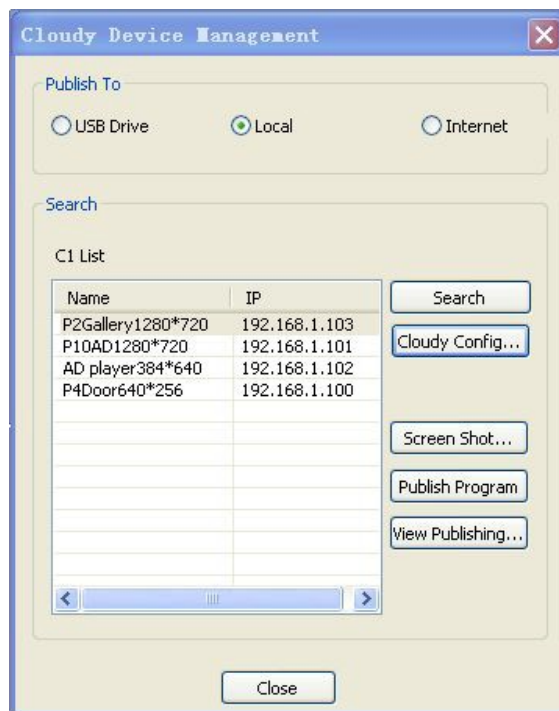


Figure 3-1

After you select **Local**,LEDVISION will search C1 in LAN,and show C1'name and IP like Figure 3-1.

**Search:**Click it and LEDVISION will search C1 again in LAN.

**Cloudy Configure:**You can see it in next section.

**Screen Shot:**Chose a C1,and click Screen Shot ,LEDVISION will get the screenshot of C1.It means that you can see what is C1 playing even if you can't see the LED display.

**Publish Program:**Chose a C1 and click it,You can send program to C1.

**View Publishing:**View the information of publish history.

## 3.2 Cloudy Configure

As you see in Figure 3-1, **Cloudy Configure** is for setting C1's parameter.

Setup: Chose a C1 and click **Cloudy Configure**, input password: 12345. Then you should see the interface like Figure 3-2.

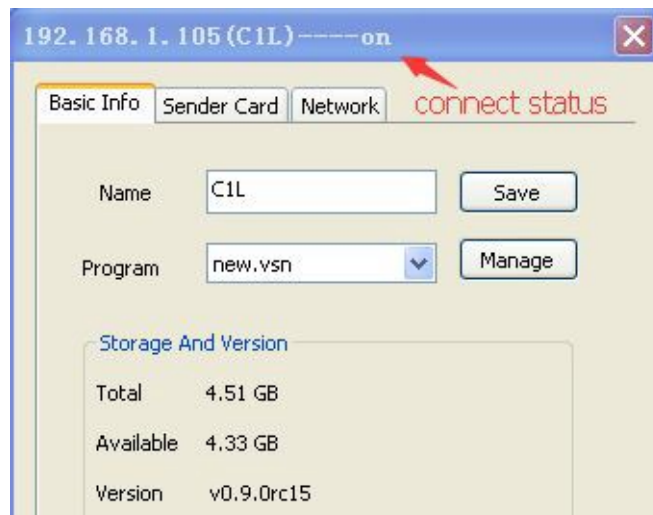


Figure 3-2

### Basic Information: Name:

Change C1's name.

**Program:** View the program in C1's storage, And chose a program you want to play.

**Manager:** View the program, And delete it.

**Storage And Version:** View the storage and version of C1.

### Sender Card:

**Detect:** Detect the sender card's type.

**Bright and color temperature:** Adjust C1's brightness and color temperature.

**Control Area:** Change C1's control area.

### Network:

This interface is as same as the interface introduced in section 1.3.

## 3.3 The Rule Of Updating Program In LAN

The program updated by USBdrive and by LAN are stored in different places. They didn't affect each other. It means that The new program updated by USB drive just cover the old program updated by USB drive before, the program updated by LAN is insusceptible. And the program updated by LAN have a rule: The same program's name will be covered.

For example: If you publish a program called **new** in LAN, and C1's storage have a program called **new** too (the program new is update by LAN). At this time, the new program called **new** will cover the old one.

If you want your every program to be stored in C1, just amend every program's name. The default name of program is **new**, you can view section 2.3 to know how to amend program's name.

## Chapter Four、Controlling C1 by phone or pad

C1 support these mobile devices: Android cellphone、android pad、iphone、ipad

### 4.1 Use Environment

Just like C1 controlled by PC in LAN.If you want to control C1,you must meet one of the conditions:

- 1、 Mobile devices connect C1L's wifi-ap.
- 2、 Mobile devices and C1S or C1L in the same LAN.

After confirming the environment,You can USB APP to control C1.

### 4.2 APP Introduce

Open the APP called LedManager,you will see the home page interface like Figure 4-1.

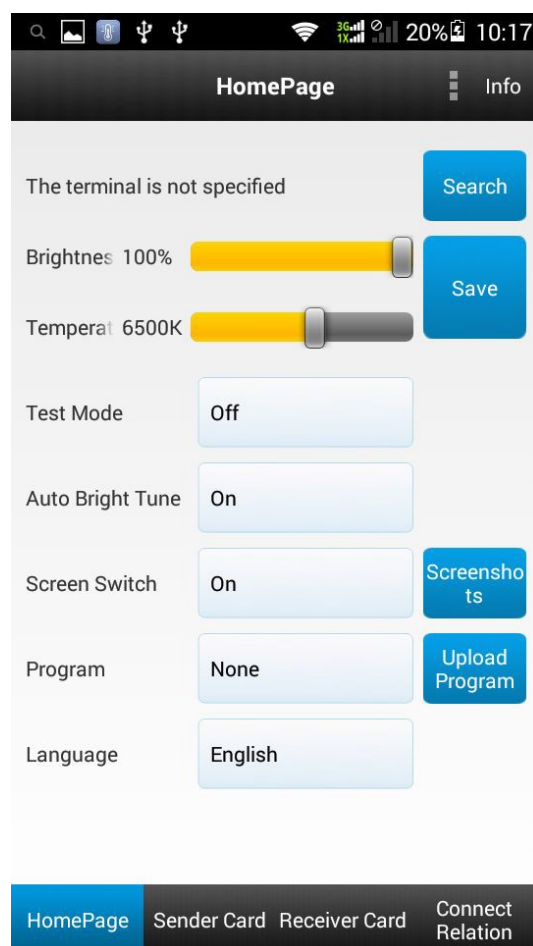


Figure 4-1

#### 4.2.1 Connect C1

Click **Search** and you can see the interface like Figure 4-2.



Figure 4-2

If you use environment is correct,you should find the C1's name and IP.Chose a C1 and input password:12345,and connect succeed.

### 4.2.2 Home Page Interface

**Brightness:**Adjust the LED display's brightness.If you find it don't work,please turn off the **Auto Bright Tune** in **Sender Card** interface.

**Temperature:**Adjust the LED display's color temperature.

**Save:**Save the brightness and temperature you change.

**Screen Switch:**Turn on/off the LED display.

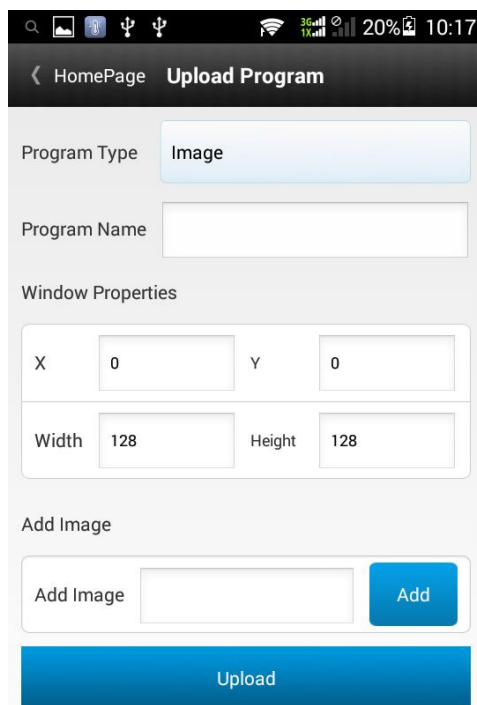
**Screenshot:**Order the C1 screenshot and show you the screenshot.

**Program:**View the programs in C1's storage,and chose one you want to play.

**Upload Program:**Upload video or image to C1.

**Language:**Select language.

### 4.2.3 Upload Program Interface



At this interface, you can upload your image, video, single-line text and multi-line text.

- Step1: select program type;
- Step2: set a program name;
- Step3: set your playing window;
- Step4: add your file;
- Step5: upload.

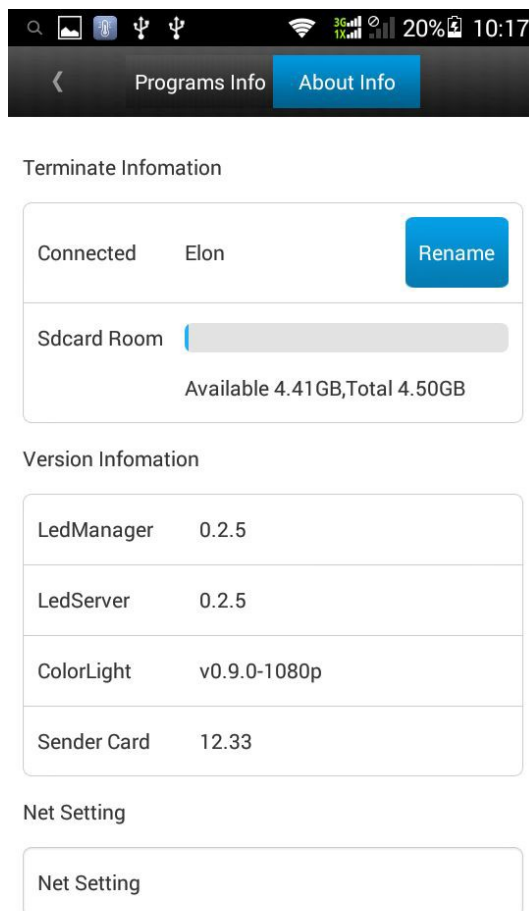
### 4.2.4 Sender Card Interface

**Detect:** detect the sender card's type.

**Net Port Area Setting:** set A/B port's control area.

**Send:** Send the setting to C1, and the password is **168**.

## 4.2.5 Info Interface



At this interface, you can rename your C1's name, and view the storage of C1, the version of C1.



## Chapter Five、 Special purpose

### 6.1 Loop Cable Backups

C1's A/B port connect receiver card by cable in the loop,like Figure 6-1.

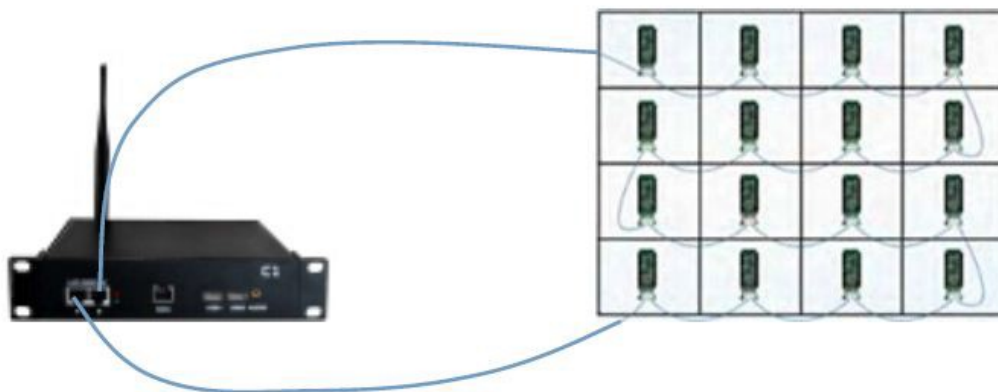


Figure 6-1

Advantage:

- 1、 Whether A port or B port doesn't work,The LED display is normal working,and you can't feel its port switched.
- 2、 NO matter witch cable node is damaged,The LED display is normal working,and you can't feel its port switched.

**Notice:** A/B port's control area must be the same.

### 6.2 LAN Give Fixed IP to C1

There are two solution:

- 1、 Setting C1 to use fixed IP,like section 1.3.3.
- 2、 You can use info.txt to get the information of C1 like section 1.4.You should see MAC(Media Access Control) in it.You can set router to bound the MAC to a fixed IP.

## 6.3 Switch From synchronization to asynchronization



Figure 6-2

First, you must use LEDVISION to debug the LED display correctly. Confirming the LED display is normal. And you should connect PC's Ethernet port to C1's B port, and C1's A port to receiver card, just like Figure 6-2. At this time, the LED display is playing the program from PC. If you unplug the cable from PC's Ethernet port to C1's B port, you should see the LED display is playing C1's program.

## 6.4 Cluster Management

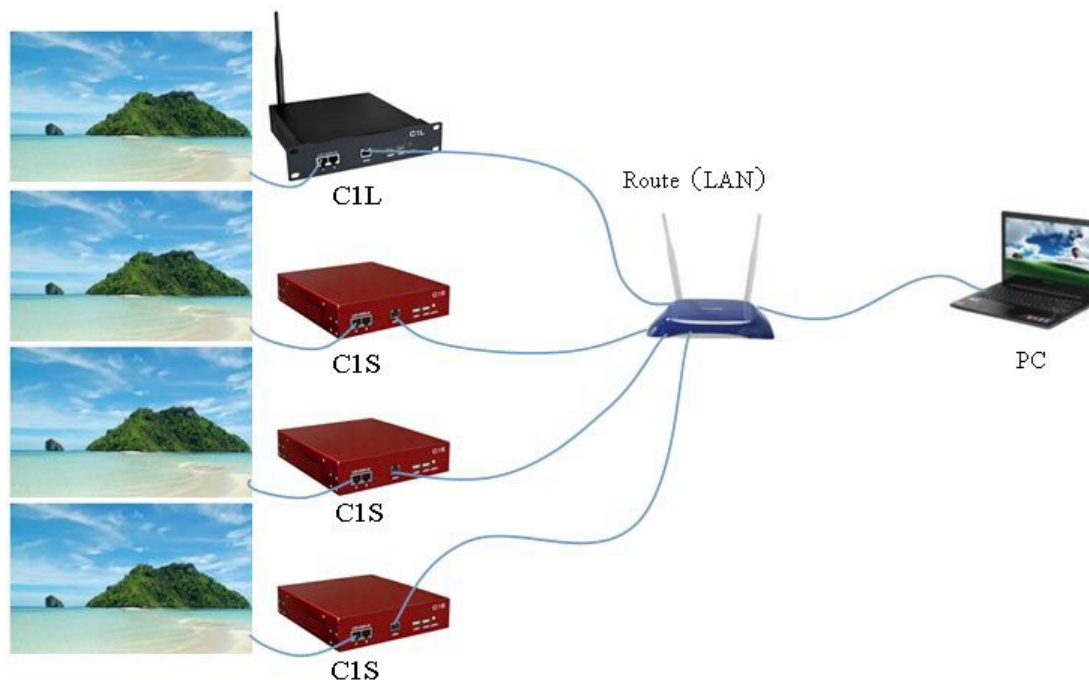


Figure 6-3

If you have many displays, you can control them like Figure 6-3. The length of every cable in Figure 6-3 must be within 100 meters. If you want to control display farther, please use optical fiber. And if the router doesn't have enough LAN port, you can use Ethernet switches to add the quantity of LAN port.