



INSTRUCTIONS

C3 Pro Player

USER MANUAL

Safety Precautions

Before use of the equipment, please read all safety precautions to ensure safe and correct use of the product!

1.1 Do not open the cover

In order to prevent personal accidents, people rather than the Company's technical personnel may not open the upper cover of the equipment.

1.2 Please use the power supply and accessories approved by the manufacturer

The power supply of this product supports DC 5V-12V power input. Please use the power cord attached with the package of this product or use the power cord conforming to the standard.

1.3 Avoid all functional interfaces from contacting live objects

This product is an electronic product. If the functional interface contacts a live object, it may cause damage to the circuit components, thus affecting normal use of the product.

1.4 Keep away from inflammable, explosive and other dangerous goods

Keep away from inflammables and explosives. Do not use this product in inflammable and explosive environment!

1.5 This product does not support waterproof design. Do not directly have it contact liquid or use it in humid environment

Safety Protection Measures

In all installation processes of C3 Pro networking player, please follow the safety rules to avoid personal injury and equipment damage.

Unpacking and Inspection

After unpacking, check the items according to the packing list in the box. Please contact the salesman in time if you find the accessories are incomplete.

Overview

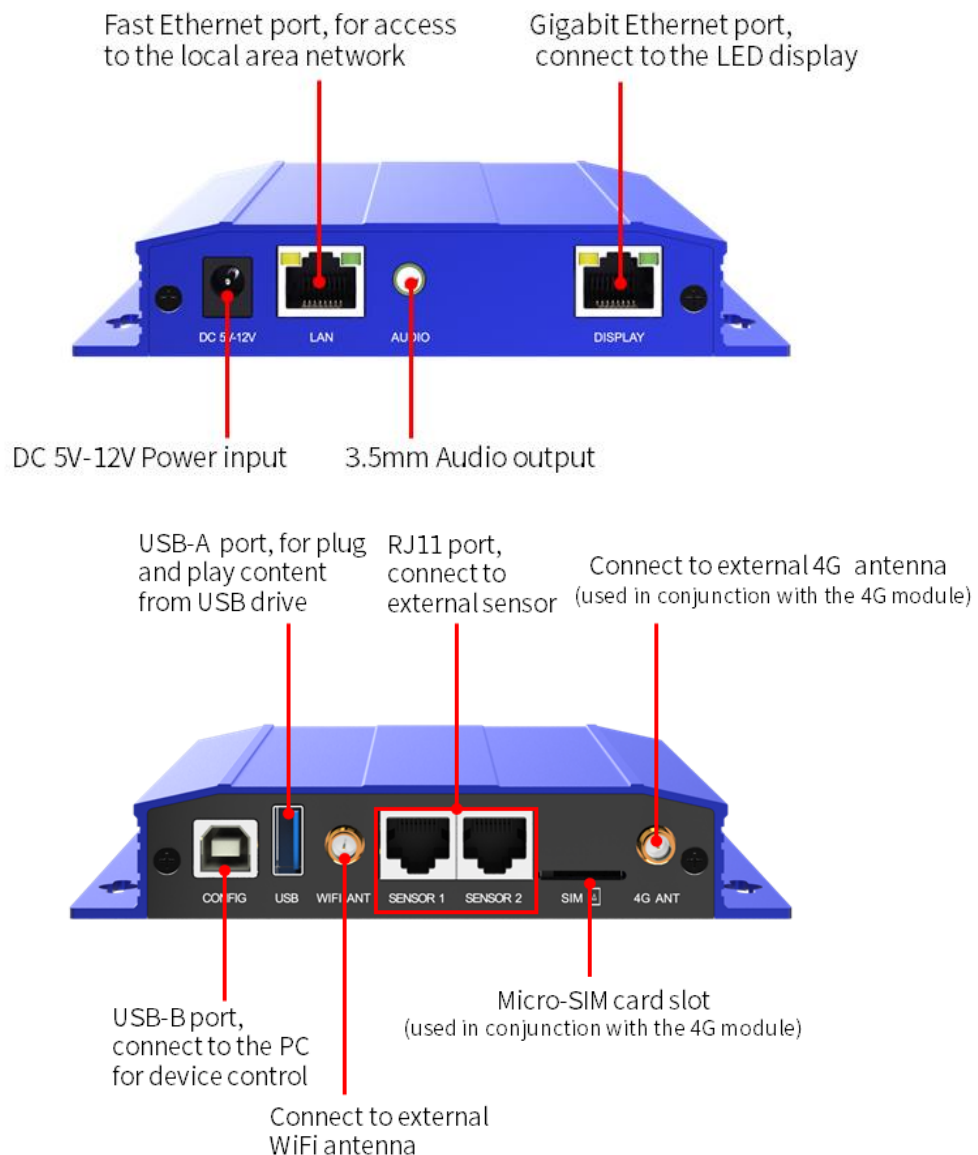
C3 Pro is a new-generation cloud networking player, which supports the ColorlightCloud, 4G, WiFi, wired network and other various networking methods, and can be deployed rapidly to achieve intelligent cloud management function, and multi-screen, multi-business ad cross-regional unified management. It has significant advantages in the fields of indoor and outdoor fixed installation, centralized management, publish and monitoring, and can be widely used in various commercial display fields such as lamp post screen, storefront display screen, advertisement player, mirror screen, vehicle screen, etc.

Features

- Strong processing performance, supporting H.265 4K high-definition video hard decoding and playing
- It supports 8GB memory, and users can use 4GB
- Multiple play modes, supporting plug and play content from USB flash drive
- Window and materials
 - Support playing multiple program pages (32 pages at most)
 - Support rich media materials, such as pictures, videos, texts, clocks, etc., and support video and picture zooming
 - Support multi-window playing and overlay, and the window size and position can be set freely
 - Play up to 4 high-definition windows or one 4K video play window at the same time
- Comprehensive control scheme
 - Support control from multiple control platforms, such as LED Assistant for smartphones and tablets, and PlayerMaster for PC
 - Support management from different software, convenient for different applications

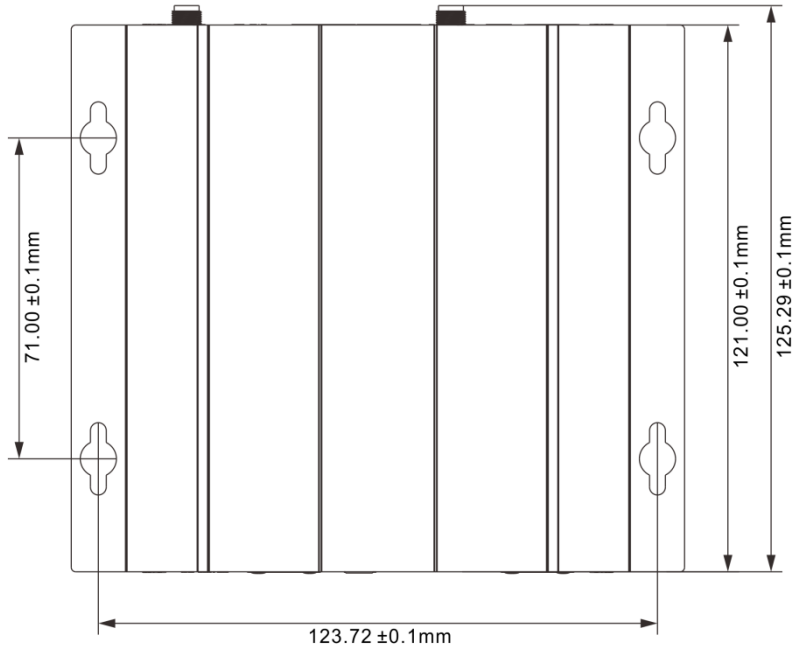
- Network communication
 - WiFi dual band dual mode, WiFi hotspot mode or WiFi client mode, supporting WiFi 2.4G And 5G band¹
 - LAN, supporting DHCP mode and static mode
 - 4G communication, supporting 4G network in various countries (optional)

Appearance Description




¹ The signal stability and quality of WiFi hotspot and WiFi client is related to the transmission distance, wireless network environment and WiFi band.

Installation Instructions



Installation method: fix the device to the screen or the wall with 4 bolts or nuts of which the diameter is 3mm.

Installation height: the installation location is within 1.0m off the horizontal plane.

 To prevent personal injury and to protect the device from damage:

- Ensure that all structure or materials and the suggested installation method can support the weight of the device.
- Ensure that all screws are securely tightened according to the wall-mounted device manufacturer' s instructions.
- Your device should be installed on the concrete wall or pillar. Before installation, you may need to reinforce the plasterboards, plaster, plastic boards, steel, wooden walls, pillars or studs.
- Keep holding the device until you are sure that the device has been completely fixed according to the instruction that comes with the selected installation solution.

Quick Start Guide

You can learn how to use the C3 Pro player after you master the following three steps:

Step 1: Properly connect the player with the LED display

Step 2: Configure player parameters

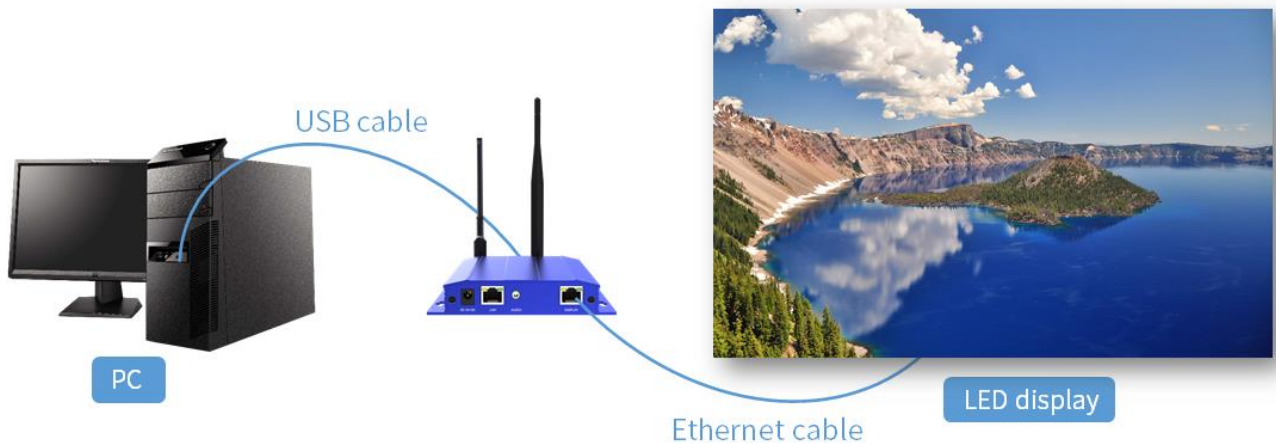
Step 3: Edit and publish programs

Note:

1. Go the next chapter to learn detailed configuration methods.
2. Download related software from www.colorlightinside.com.

Detailed Setup Steps

Step 1: Properly connect the player with the LED display

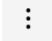



Step 2: Configure player parameters

Player parameters contain two aspects:

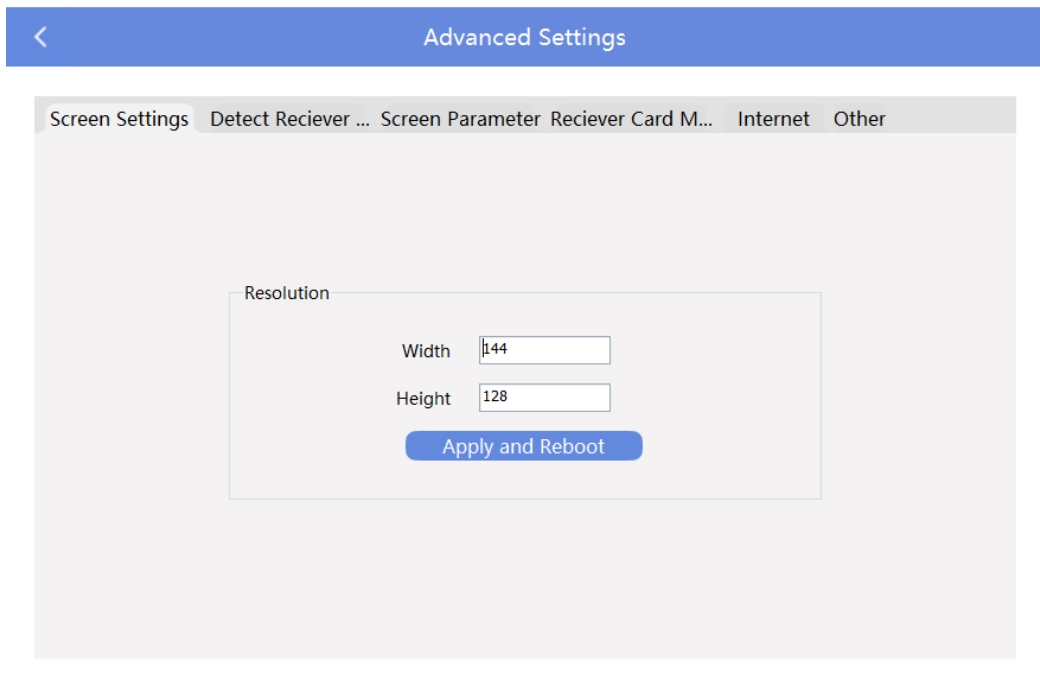
1. Screen resolution: Set according to the resolution of the LED display
2. Network parameters: Set according to your actual need
 - Standalone player: No configuration is required.
 - LAN mode: You can select a network connection method from LAN, WiFi and WiFi hotspot for configuration.
 - Cloud mode: You can select a network connection method from LAN, WiFi and 4G for configuration.

1. Set screen resolution


Open PlayerMaster software, click  in the top right corner, select [Software Settings] > [LAN mode].

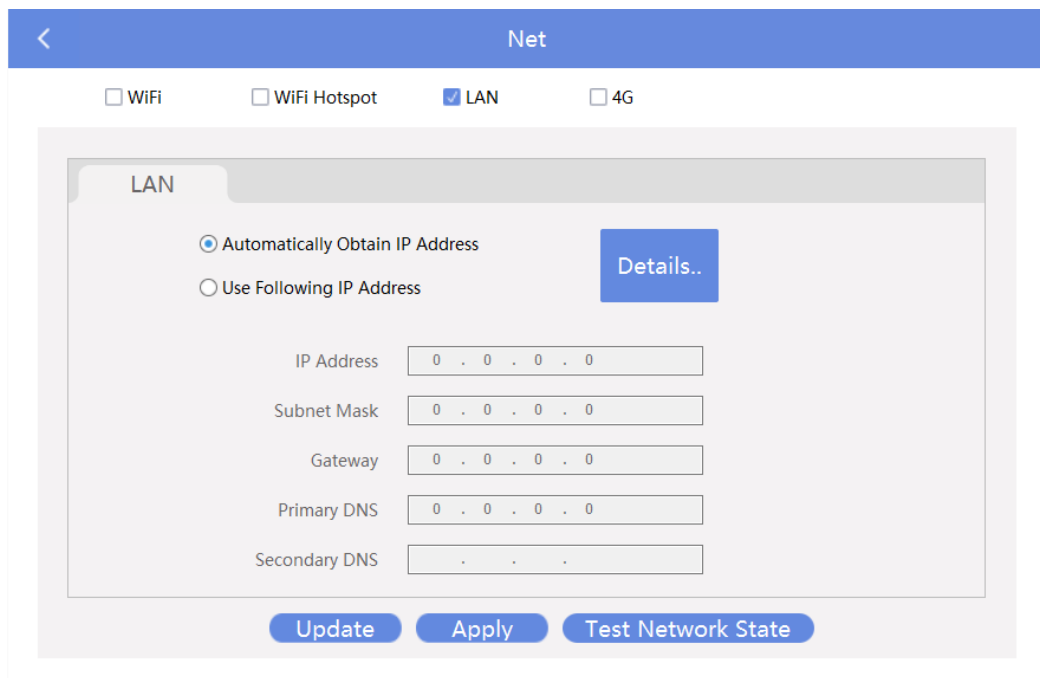
Select the player in the left list, and on the “Device” page, click the advanced setting icon  in the bottom right corner, and enter the password “168” to enter the parameter configuration interface.

Screen Settings: Set as the actual resolution of the LED display.



2. Configure network parameters

On the “Device” page, click the network setting icon  to enter the following interface:

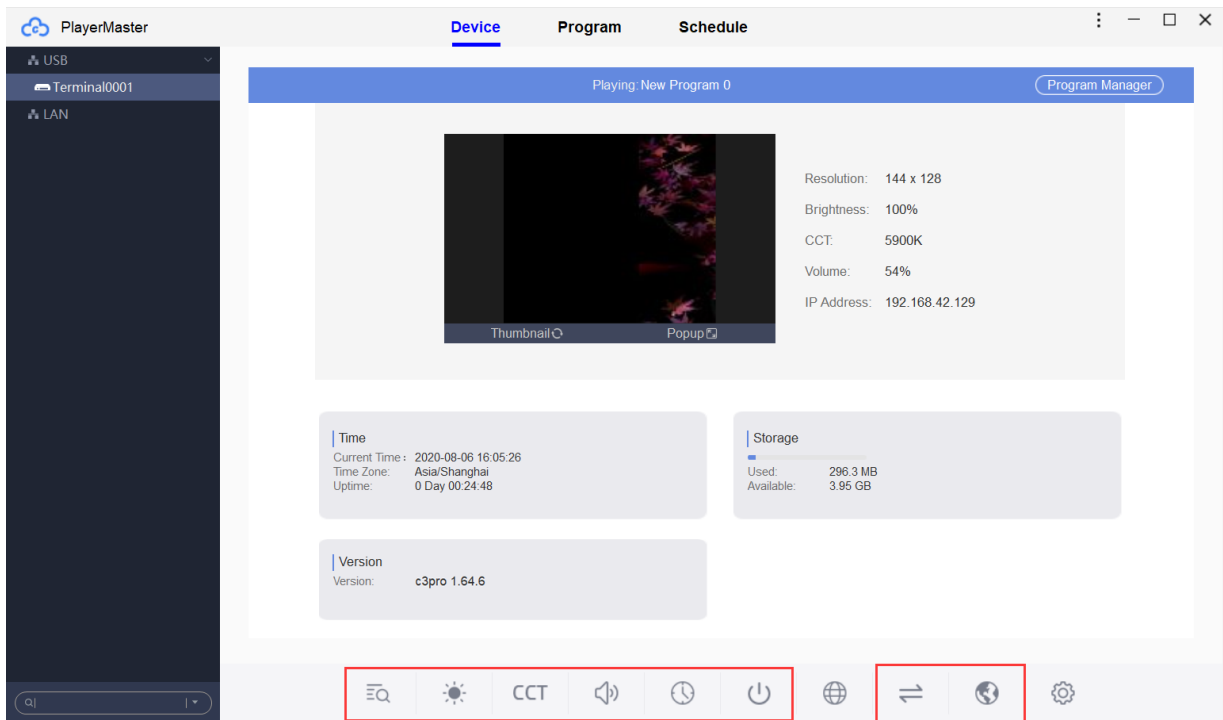


Take LAN as an example, the player will automatically obtain the IP address after connecting to the Ethernet cable.

After setting, you can create and publish programs, and manage the device via this communication method.

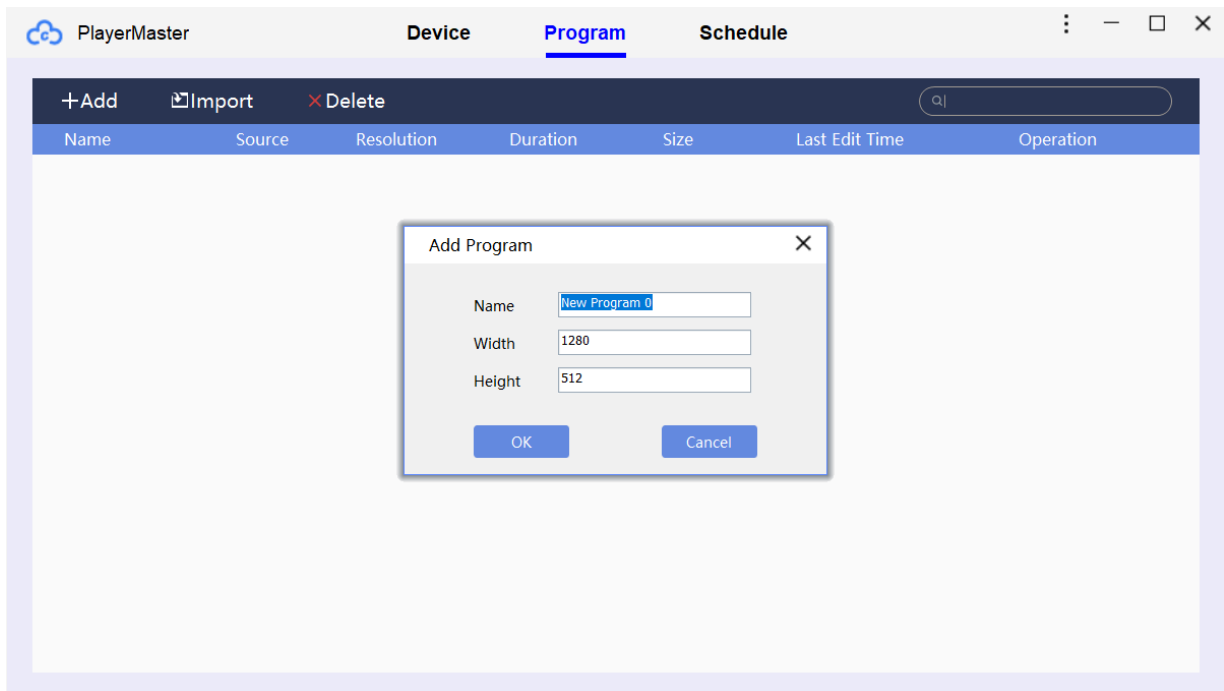
3. Optional: Configure other player parameters

Other functions: Viewing schedules, brightness settings, color temperature settings, volume settings, time settings, power settings, signal switching, device language settings.



Step 3: Edit and publish programs

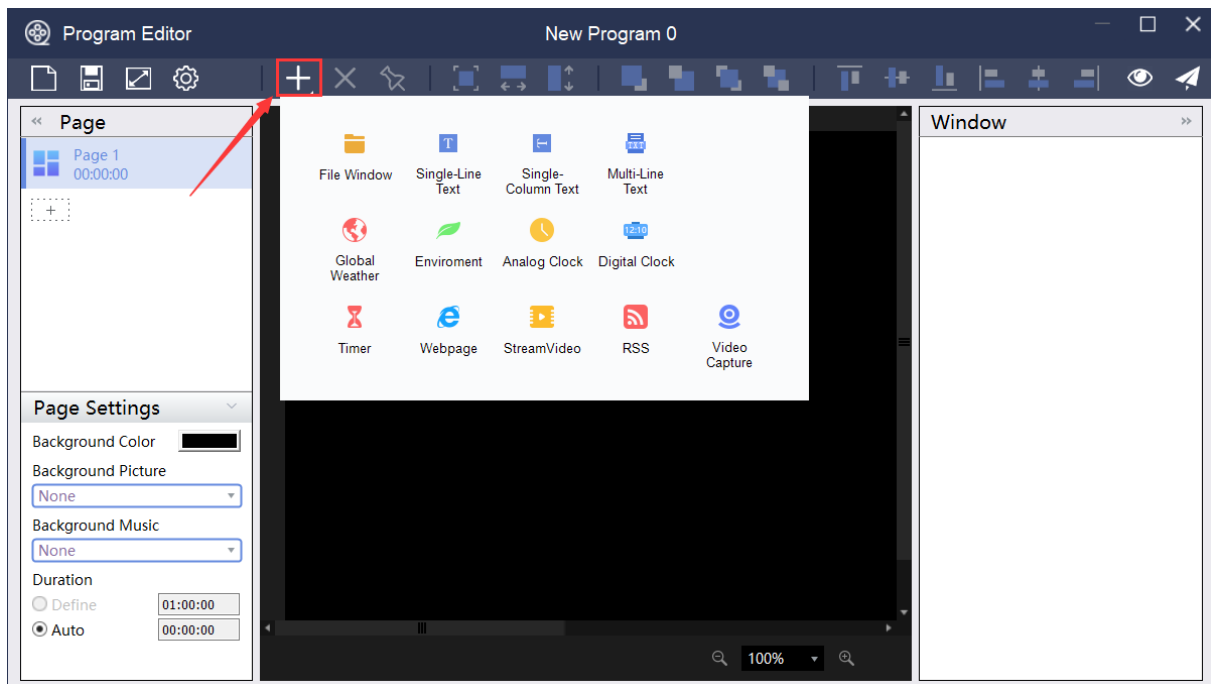
1. On the “Program” page, click **+Add** , and set program resolution (the same as screen resolution generally), and then click [OK] to enter the “Program Editor” window.



| | |
|---------|--|
| Program | Programs can be separately sent to the player for playing. |
| Page | If you want different window layouts in the same program, you can set the layouts in different program pages. |
| Window | You can add more than one window to one page. The content of windows on the same page will play simultaneously. You can set the layout of a program by adjusting the location and size of windows. |
| Item | It refers to the content displayed on the LCD display, including the video, picture, Gif, text file and Office file. |

Note: Pages in the same program and contents in the same window both play successively, while contents in different windows on the same page play simultaneously.



2. Click  to add different types of windows.

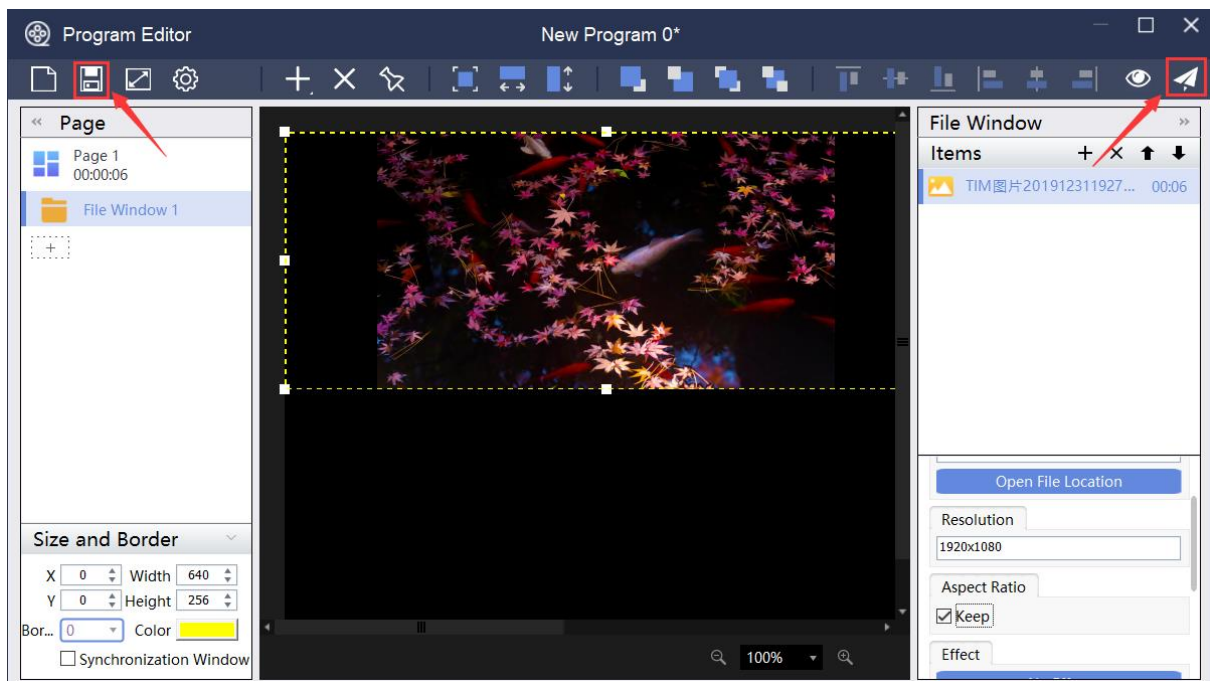


Description of Window Type

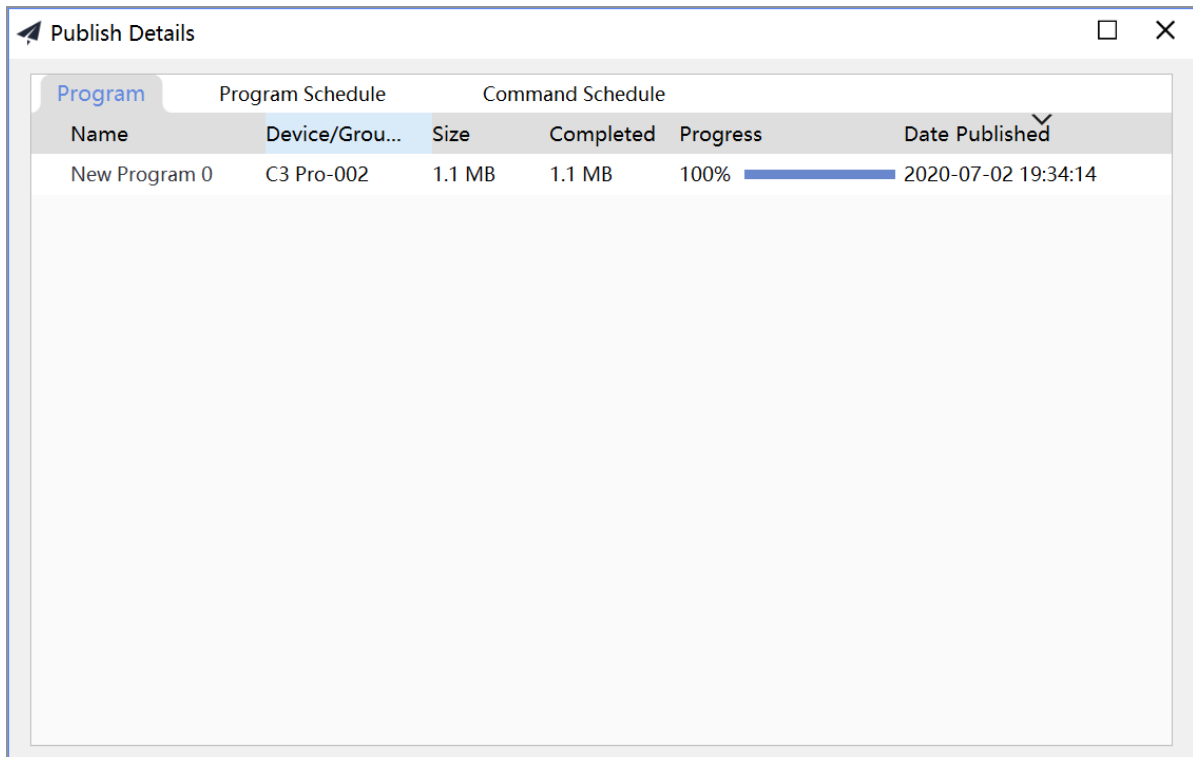
| No. | Window Type | Description of Content |
|-----|--------------------|---|
| 1 | File window | Video, picture, Gif, Txt document, RTF document, Office document (Word, Excel, PPT) |
| 2 | Single-line text | Txt document, manual editing and input |
| 3 | Single-Column text | Txt document, manual editing and input |
| 4 | Multi-line text | Txt document, RTF document, Word document, manual editing and input |
| 5 | Global Weather | Weather in global cities |
| 6 | Environment | Temperature, humidity, smoke, noise and air quality |
| 7 | Analog Clock | Round image clock |


| | | |
|----|---------------|--|
| 8 | Digital Clock | Digital timing clock |
| 9 | Timer | Count-up timer, count-down timer |
| 10 | Webpage | Manually enter the website, such as www.colorlightinside.com |
| 11 | Stream Video | Program on the streaming medium website |
| 12 | RSS | News subscription |

3. Select different windows and items that you wish to add to your program. After editing the program, click  to save the program, and click  to publish the program.



After sending the program, the LED display will display the content you have just published.



| Publish Details | | | | | |
|-----------------|-----------------|------------------|-----------|---|---------------------|
| Program | | Program Schedule | | Command Schedule | |
| Name | Device/Group... | Size | Completed | Progress | Date Published |
| New Program 0 | C3 Pro-002 | 1.1 MB | 1.1 MB | 100%  | 2020-07-02 19:34:14 |

Note

You can refer to the *PlayerMaster User Manual* for a detailed description of advanced functions or contact our technical staff for more information.

FCC Caution:

Any Changes or modifications not expressly approved by the party responsible for compliance could void the user's authority to operate the equipment.

This device complies with part 15 of the FCC Rules. Operation is subject to the following two conditions: (1) This device may not cause harmful interference, and (2) this device must accept any interference received, including interference that may cause undesired operation.

Important Note:

Note: This equipment has been tested and found to comply with the limits for a Class B digital device, pursuant to part 15 of the FCC Rules. These limits are designed to provide reasonable protection against harmful interference in a residential installation. This equipment generates, uses and can radiate radio frequency energy and, if not installed and used in accordance with the instructions, may cause harmful interference to radio communications. However, there is no guarantee that interference will not occur in a particular installation. If this equipment does cause harmful interference to radio or television reception, which can be determined by turning the equipment off and on, the user is encouraged to try to correct the interference by one or more of the following measures:

- Reorient or relocate the receiving antenna.
- Increase the separation between the equipment and receiver.
- Connect the equipment into an outlet on a circuit different from that to which the receiver is connected.
- Consult the dealer or an experienced radio/TV technician for help.

FCC Radiation Exposure Statement:

This equipment complies with FCC radiation exposure limits set forth for an uncontrolled environment. This equipment should be installed and operated with minimum distance 20cm between the radiator& your body.



Visual Future

Colorlight Cloud Tech Ltd
www.colorlightinside.com